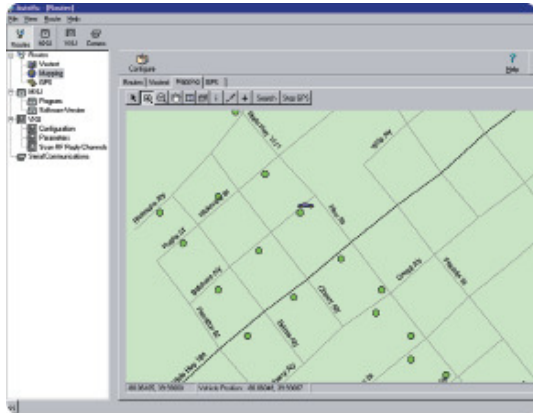


Description

User-friendly full color MS Windows screen and graphics



Route maps are automatically repositioned as the vehicle moves along



Each meter location is shown and readings are verified

Features

INTRODUCTION

Graphic on-screen mapping for the Sensus RadioRead™ and FlexNet Drive By Solutions. The AutoVU software module enhances vehiclebased radio reading.

Note: This installation sheet is only for the AutoVU Software Module. For instructions on installing other AMR devices, please request and refer to the individual installation instructions for those devices.

GENERAL INFORMATION

Participation in the Sensus Systems Support Program is strongly recommended, requisite in nature. This recommendation is made so that all customers will receive the same consistent product support and service benefits available in the program.

The fee for the first year of the Sensus Systems Support Program is included in the price of the AutoRead software. Initial program coverage begins on the ship date of the Sensus AutoRead System software to customer. Yearly renewal notices will be mailed to customers approximately 60 days prior to their first year expiration date.

Customers who do not choose to renew during their renewal period can contact Sensus at any time in future years to enroll in the System Support Program.

PROGRAM FEATURES

- Provides GPS based mapping interface to graphically depict the location of each meter along a meter reading route and instantly verify each reading
- Uses precise locating and mapping technology made possible by existing low earth orbiting Global Positioning Satellites (GPS)
- Meter locations along each route can be optionally set by the utility to change color or disappear from screen as each meter reading is successfully collected.
- The on-screen map automatically shifts position when used with the GPS System, keeping the meter reading vehicle location "positioned" on the map as it travels along the meter reading route

- Provides ability to include map layers - i.e., water, street names, etc. when the maps are displayed.
- Shortens meter reading time and helps reduce costs
- On-screen instant reading verification helps eliminate the need to re-drive the complete meter reading route to obtain readings which may have been missed
- Helps eliminate guesswork in establishing the most efficient routes for radio based meter reading
- Alerts the meter reader of "high" and "low" reading limit discrepancies and low battery signals
- Non-radio equipped meters can be depicted on the digital route maps to alert the user that manual or special readings are required at specified locations. Reading route statistics are saved and displayed as the routes are loaded and being read.

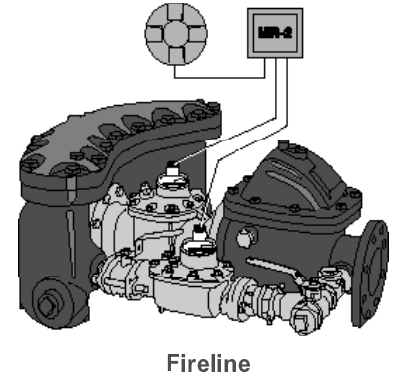
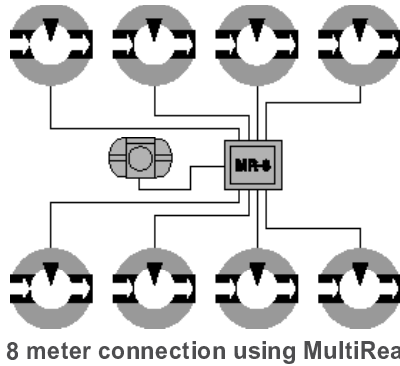
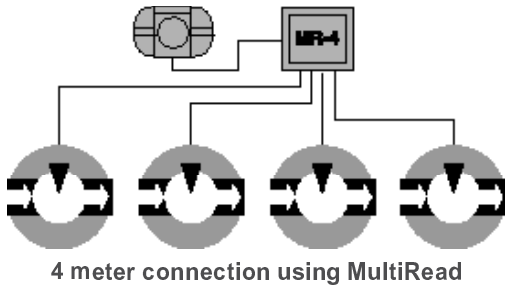
© All products purchased and services performed are subject to Sensus' terms of sale, available at either; <http://na.sensus.com/TC/TermsConditions.pdf> or 1-800-METER-IT. Sensus reserves the right to modify these terms and conditions in its own discretion without notice to the customer.

This document is for informational purposes only, and SENSUS MAKES NO EXPRESS WARRANTIES IN THIS DOCUMENT. FURTHERMORE, THERE ARE NO IMPLIED WARRANTIES, INCLUDING WITHOUT LIMITATION, WARRANTIES AS TO FITNESS FOR A PARTICULAR PURPOSE AND MERCHANTABILITY. ANY USE OF THE PRODUCTS THAT IS NOT SPECIFICALLY PERMITTED HEREIN IS PROHIBITED.

SAMPLE INSTALLATIONS: MULTIREAD®

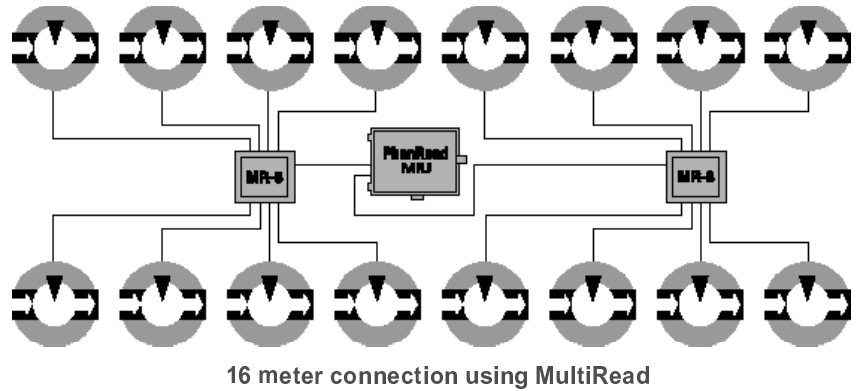
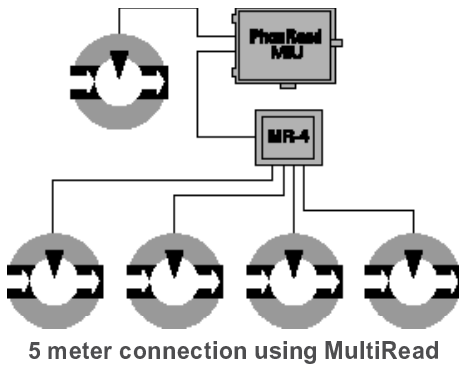
Refer to the MultiRead installation information sheet AMR-306 for details on the MultiRead module installations to the various Sensus AMR systems.

TouchRead®

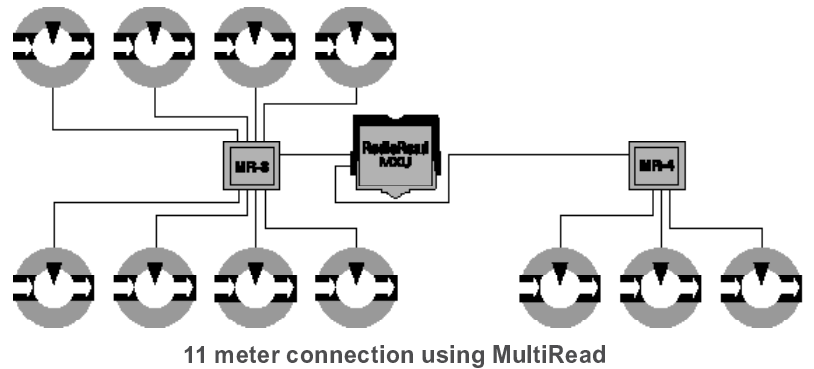
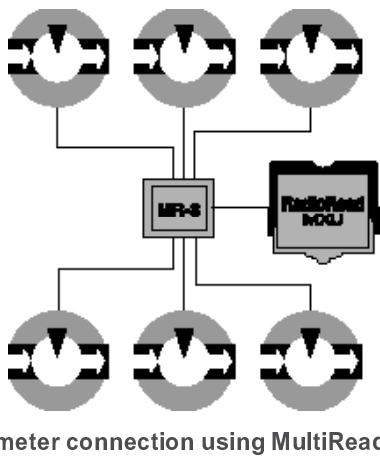


PhoneRead®: For MIU Model 205 or Higher

Refer to the MultiRead installation information sheet AMR-306 for details on the MultiRead module installations to the various Sensus AMR systems.



RadioRead®: For MIU Model 505 or Higher



The RadioRead Meter Transceiver Unit (MXU) has two ports for connecting meters and MultiRead modules. Any combination of meters and MultiRead modules can be used up to a maximum of 16 meters (two 8-channel MultiRead modules each connected to the two MXU ports).

NOTE: For RadioRead MXU only: The Schlumberger Proread register cannot be connected to read through a MultiRead module. The Proread register must be connected directly to the MXU.

© All products purchased and services performed are subject to Sensus' terms of sale, available at either: <http://na.sensus.com/TC/TermsConditions.pdf> or 1-800-METER-IT. Sensus reserves the right to modify these terms and conditions in its own discretion without notice to the customer.

This document is for informational purposes only, and SENSUS MAKES NO EXPRESS WARRANTIES IN THIS DOCUMENT. FURTHERMORE, THERE ARE NO IMPLIED WARRANTIES, INCLUDING WITHOUT LIMITATION, WARRANTIES AS TO FITNESS FOR A PARTICULAR PURPOSE AND MERCHANTABILITY. ANY USE OF THE PRODUCTS THAT IS NOT SPECIFICALLY PERMITTED HEREIN IS PROHIBITED.