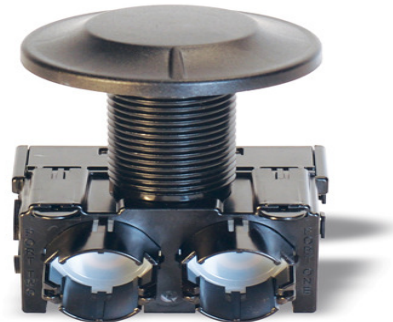


Description

Model 520M – Pit Set

The FlexNet SmartPoint M2 is a radio transceiver that provides water utilities inbound and outbound access to water measurement and ancillary device diagnostics via radio signal. The SmartPoint 520M is designed for submersible, pit-set environments. With its migratable, two-way communication ability, the M-Series SmartPoint functions as a walk-by/drive-by endpoint, fixed base endpoint, or combination of the two. This flexibility increases utility data collection capabilities and streamlines operations.



Features

TOUCHCOUPLER DESIGN

The SmartPoint M2 utilizes TouchCoupler, the patented Sensus inductive coupling communication platform to interface with the encoded meter. With TouchCoupler, the SmartPoint M2 can connect to the meter using existing two wire AMR installations instead of requiring utilities to access the meter to install a new three-wire connection. This results in a fast, efficient and reliable connection at minimal cost.

OPERATION

The FlexNet SmartPoint M2 receives input from the meter register and remotely sends data to a walk-by/ drive-by or fixed base collection device. The SmartPoint M2 easily migrates from walk-by/drive-by to fixed base by simply installing a Base Station.

In walk-by/drive-by mode, the SmartPoint M2 collects data and awaits an activation signal from the Vehicle Gateway Basestation (VGB) or Hand-Held Device (HHD). Upon signal receipt, it transmits readings, the meter identification number and any alarms.

As a fixed-base endpoint, the SmartPoint M2 interacts with one or more strategically placed Base Stations located in the utility service area. Top of the hour readings and other diagnostics are instantly forwarded to the Regional Network Interface (RNI) at time of transmission. The FlexNet system provides unmatched reliability by

using expansive tower receiver coverage of metering end points, data/message redundancy, fail over back up provisions and operation on FCC primary use (unshared) RF spectrum.

POWERFUL TRANSMISSION, FLEXIBLE PLATFORM

The SmartPoint M2 offers several advantages that control both deployment and lifetime operation costs. It's powerful, industry leading two watt transmitter broadcasts over large distances and minimizes collection infrastructure. And once the SmartPoint M2 is installed, its migratable, two-way system platform can be updated without requiring personnel to visit each meter and/or inconveniencing customers.

ADDITIONAL SMARTPOINT M2 FEATURES

The SmartPoint M2 obtains hourly readings and can monitor continuous flow over a programmable period of time, alerting the utility to leak conditions. In addition, the SmartPoint M2 stores up to 840 consumption intervals (35 days of hourly consumption), providing the utility with the ability to extract detailed usage profiles for consumer information and dispute resolution. The SmartPoint M2 also incorporates a two-port design, allowing the utility to connect multiple registers and ancillary devices (such as acoustic monitoring) to a single SmartPoint. This results in a compact installation that saves

time, space and money - without reducing system performance.

SPECIFICATIONS

SERVICE	Pit set installation interfacing the utility meter to the Sensus FlexNet system. Unit requires 1.75" diameter hole in pit lid; fits pit lid thicknesses up to 1.75"
PHYSICAL CHARACTERISTICS	Width: 4.43" x Height: 5.09" x Depth: 3"
WEIGHT	1.0 lbs/16.0 oz
COLOR	Black
FREQUENCY RANGE	900 – 950 MHz, 8000 channels X 6.25 kHz steps
MODULATION	Proprietary Narrow Band
MEMORY	Non-Volatile
POWER	Lithium Thionyl Chloride batteries
APPROVALS	US: FCC CFR 47: Part 90, Part 24D, Part 101C, Part 15 Licensed operation Canada: Industry Canada (IC) RSS-134, RSS-119, RSS-210
OPERATING TEMPERATURE	- 22° F to +185° F - 30° C to + 85° C
OPTIONS	Dual or single port availability; TouchCoupler only, wired only, Nicor connection
INSTALLATION ENVIRONMENT	100% condensing, water submersible
COMPATIBILITY	TouchCoupler and Wired Version: Sensus Encoded Registers Badger ADE water registers and MasterMeter AccuLinx Wired Version Only: Elster Encoder (Sensus protocol) and Neptune ARB VI (ProRead). Hersey Translator
WARRANTY	20 years – Based on six transmissions per day. Refer to Sensus G-500 for warranty.

© All products purchased and services performed are subject to Sensus' terms of sale, available at either; <http://na.sensus.com/TC/TermsConditions.pdf> or 1-800-METER-IT. Sensus reserves the right to modify these terms and conditions in its own discretion without notice to the customer.

This document is for informational purposes only, and SENSUS MAKES NO EXPRESS WARRANTIES IN THIS DOCUMENT. FURTHERMORE, THERE ARE NO IMPLIED WARRANTIES, INCLUDING WITHOUT LIMITATION, WARRANTIES AS TO FITNESS FOR A PARTICULAR PURPOSE AND MERCHANTABILITY. ANY USE OF THE PRODUCTS THAT IS NOT SPECIFICALLY PERMITTED HEREIN IS PROHIBITED.